



Sealed Lead-Acid Battery

UPG No. 45968

UBGC8

Absorbant Glass Mat (AGM) technology for superior performance. Valve regulated, spill proof construction allows safe operation in any position. Approved for transport by air. D.O.T., I.A.T.A., F.A.A. and C.A.B. certified. U.L. recognized under file number MH 20567.

Maintenance-Free

Specification

Nominal Voltage	8 volts		
Nominal Capacity	77° F (25° C)		
20-hr. (10.0A)	200 Ah		
10-hr. (18.6A)	186 Ah		
5-hr. (34.0A)	170 Ah		
1-hr. (120.0A)	120Ah		
Approximate Weight	78.3 lbs (35.5 kgs)		
Internal Resistance (approx.)	2.2 mΩ		
Shelf Life (% of normal capacity at 77° F (25° C))			
3 Months	6 Months	12 Months	
91%	82%	64%	
Temperature Dependency of Capacity			
104° F	77° F	32° F	5° F
102%	100%	85%	65%
AGM Operational Temperature			
Charge	0°C to 40°C		
Discharge	-15°C to 45°C		
AGM Storage Temperature	-15°C to 40°C		



Charge Method (Constant Voltage)

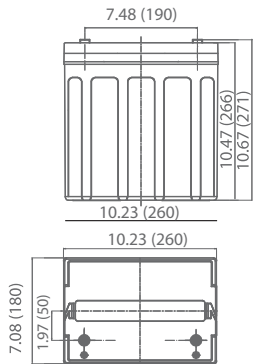
Cycle Use (Repeating Use)

Initial Current	60A or smaller
Control Voltage	9.73-9.87 VPC

Float Use

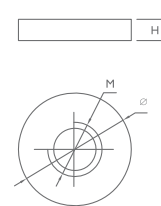
Control Voltage	9.07-9.20 VPC
-----------------	---------------

Physical Dimensions: in (mm)



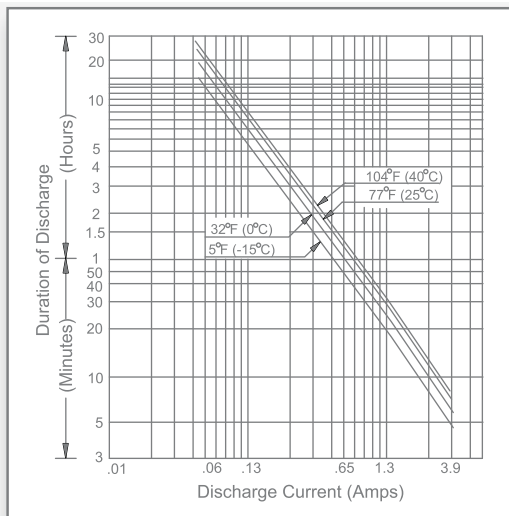
- L:** 10.23 in (260 mm)
 - W:** 7.08 in (180 mm)
 - H:** 10.47 in (266 mm)
 - TH:** 10.67 in (271 mm)
- Tolerances are +/- 0.04 in. (+/- 1mm) and +/- 0.08 in. (+/- 2mm) for height dimensions. All data subject to change without notice.

Terminals

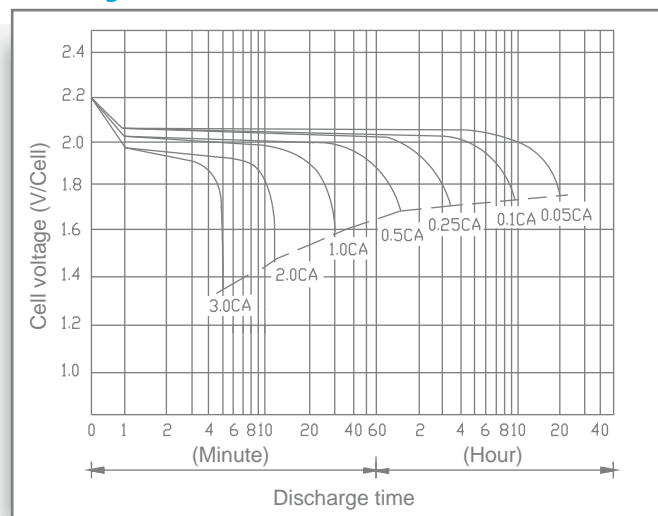


Dimension Type	M	Ø	H
I8	10.0 mm 0.39 in	19.0 mm 0.75 in	2.00 mm 0.08 in

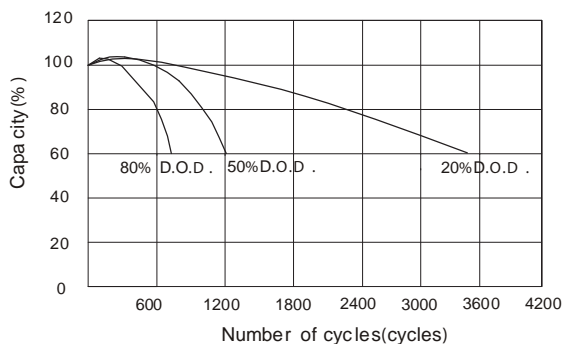
Discharge Time vs. Discharge Current



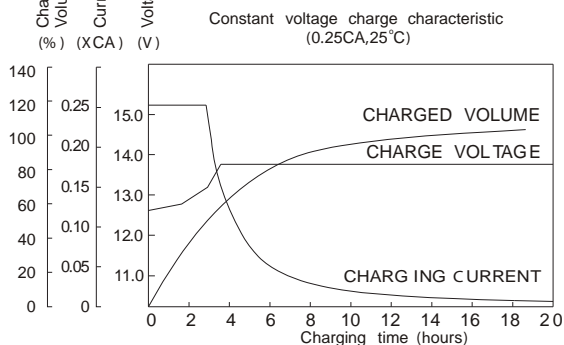
Discharge Characteristics



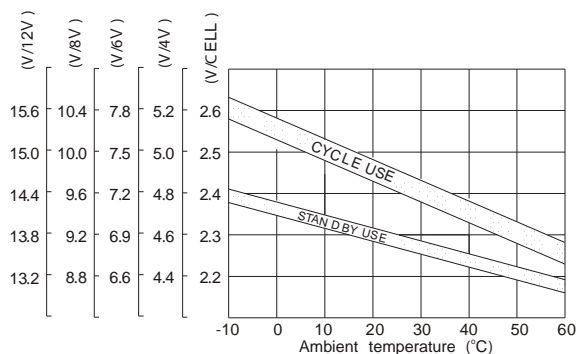
CYCLE SERVICE LIFE IN RELATION TO DEPTH OF DISCHARGE



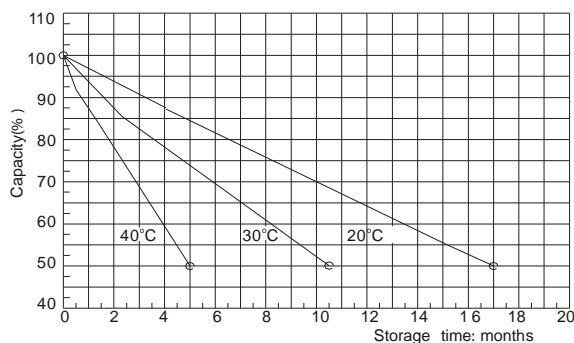
CHARGE CHARACTERISTIC CURVE



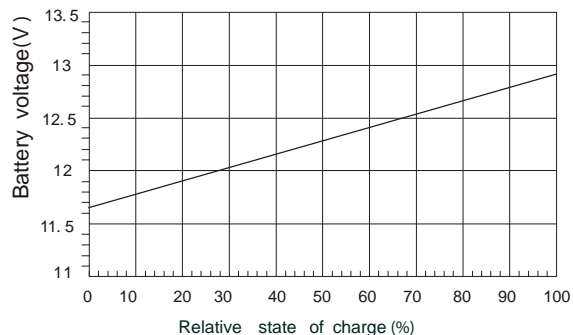
RELATIONSHIP BETWEEN CHARGING VOLTAGE AND TEMPERATURE



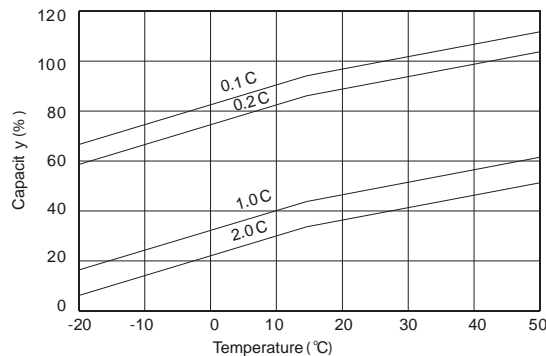
SELF-DISCHARGE CHARACTERISTIC



RELATIONSHIP OF OCV AND STATE OF CHARGE (25°C)



TEMPERATURE EFFECTS ON CAPACITY



Let UPG Power Your Life.

www.upgi.com