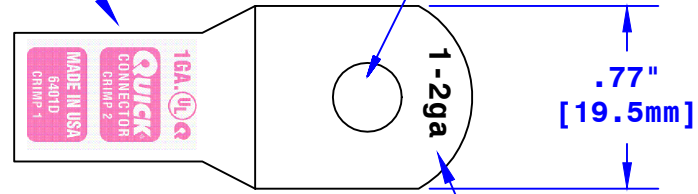


Quick Cable Reserves The Right to Alter Product Types, Their Technical Data, Dimensions, Style And Accessories Without Prior Notification.

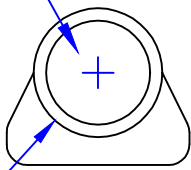
Crimp Information

Hole For 1/4" [M6] Stud



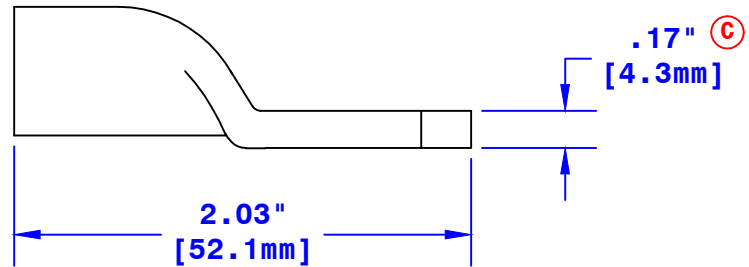
Cable Size Stamp

ID Sized For 1 or 2 Ga
[40-32mm²] Stranded Cable
3/4" [19.1mm] Min Depth



Ø.55"
[14mm]

Dia May Vary Due to Manufacturing Process



Property of QUICKCABLE 3700 Quick Drive Franksville, WI 53126 U.S.A. www.quickcable.com	TITLE
	1&2 Ga [40-32mm ²] Magna Lug
	PART #
	6401D

Confidential and Proprietary Information

Rev	Date	ECN#	By	Description
C	05-08-14	3037	MRE	Updated dimension
B	01-30-12	2459	JMH	Redrawn; printing info updated

Drawn By	Date	Checked By	Scale
Paul	03-12-03	Mike E	None
Tolerances, unless otherwise noted			
Dimensions are reference only			

Material & Treatment	Drawing #	REV
Copper Tube Tin Plated	6401D-INFO	C
Sheet 1 of 1		